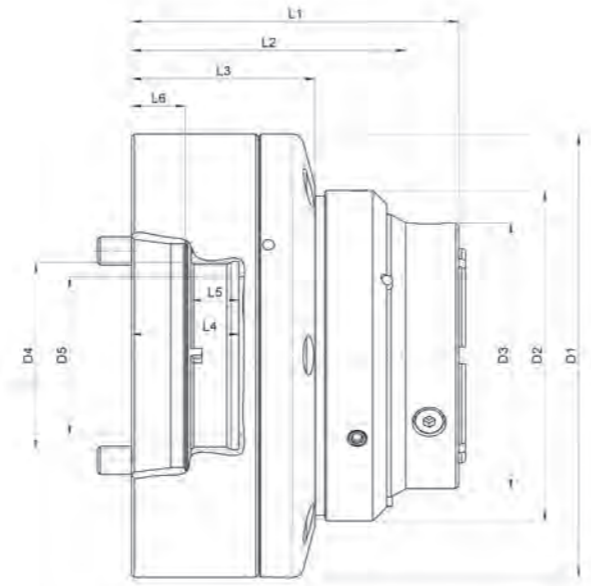


Technical data

Type	Item no.	Size	Cyl. size	rpm*
PE42-52/5A	036.8301/00	42-52	A2-5	6000
PE42-52/6A	036.8302/00	42-52	A2-6	6000
PE42-52/140	036.8303/00	42-52	140	6000

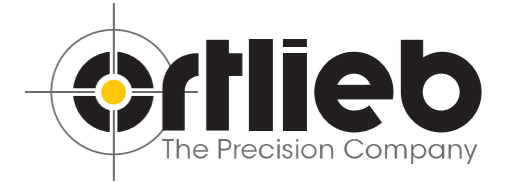
* unbalanced



Dimension table

Type	KK-Gr.	D1 mm	D2 mm	D3 mm	D4 mm	D5 mm	L1 mm	L2 mm	L3 mm	L4 mm	L5 mm	L6 mm
PE42-52/5A	A2-5	157	117	94	M66x1,5	52	116	97	65	38	17	19
PE42-52/6A	A2-6	157	117	94	M66x1,5	52	114	95	65	36	17	17,5
PE42-52/140	140	157	117	94	M66x1,5	52	116	97	65	38	17	5

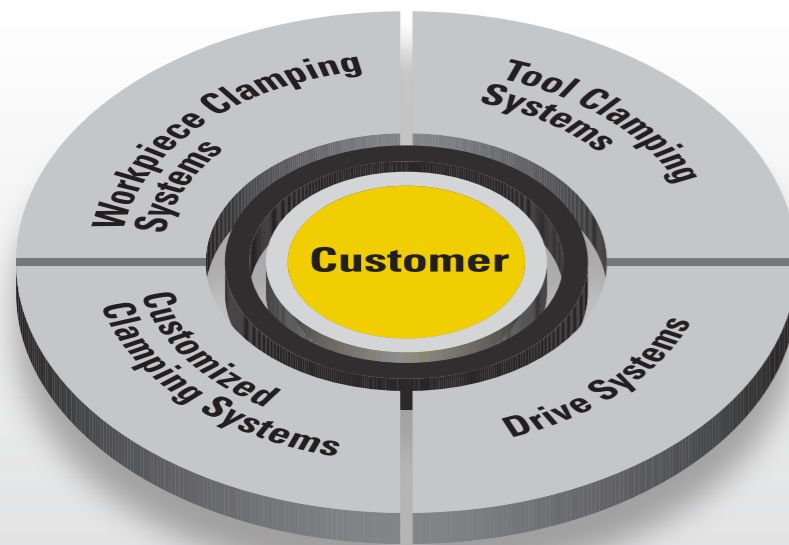
Further sizes are planned



UltraPE

The ultimate new chuck class

Ortlieb's product range



Ortlieb Präzisionssysteme GmbH & Co. KG
 Dettinger Str. 129 · 73230 Kirchheim / Teck
 Tel. +49 (0)7021 - 9469-0
 Fax +49 (0)7021 - 9469-51
 info@ortlieb.net · www.ortlieb.net

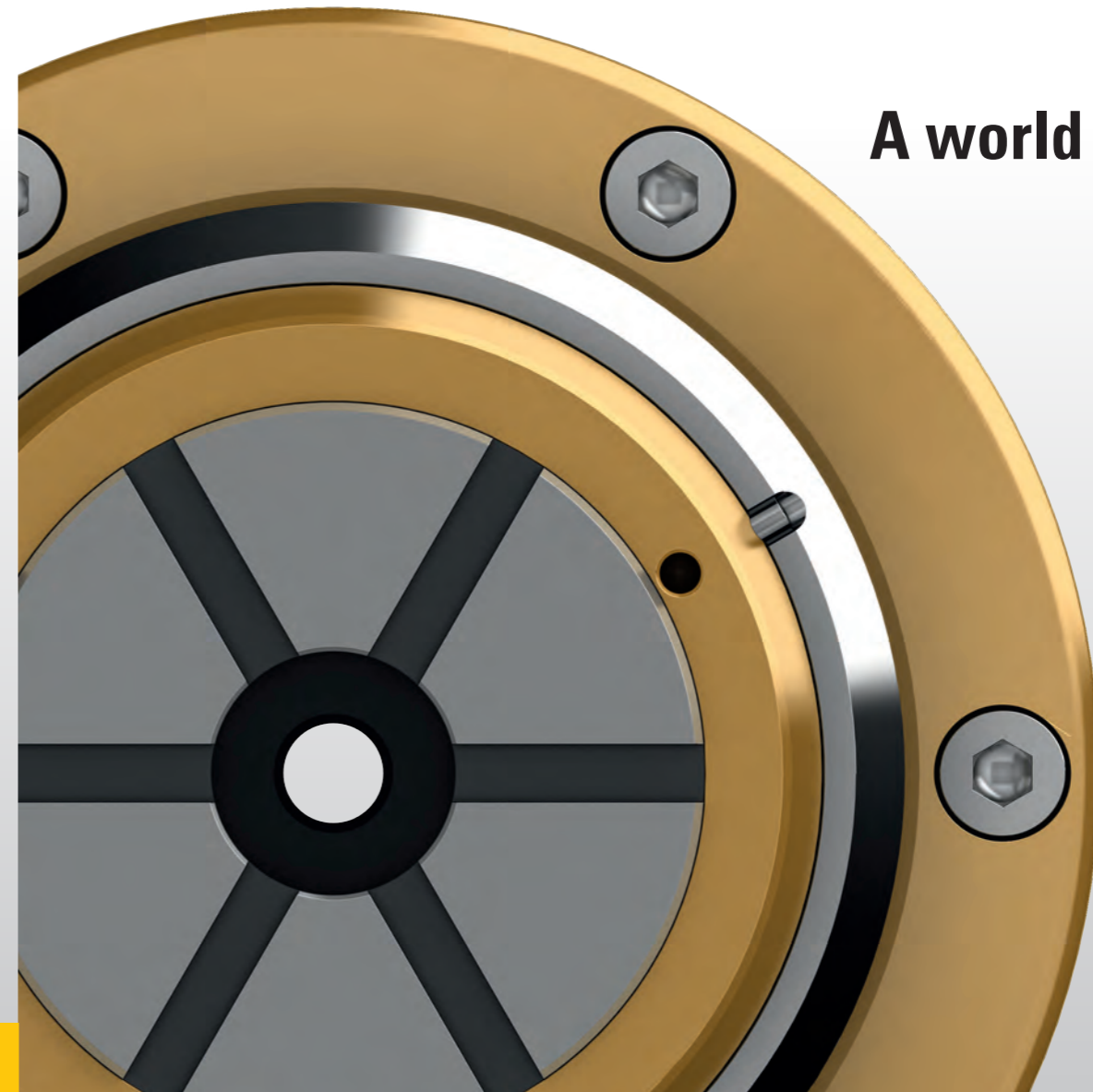


Centerline Inc

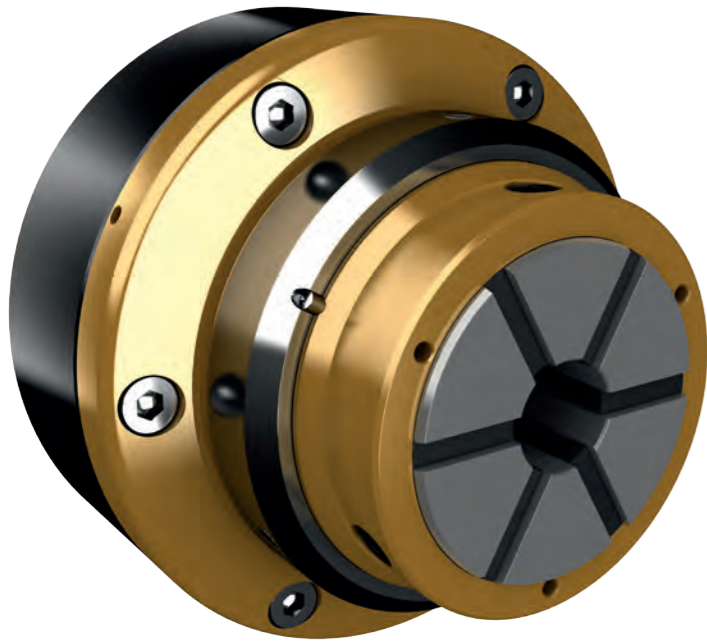
Centerline Inc
 2110 N Ash Street
 Ponca City, OK 74601

www.centerline-inc.com
 info@centerline-inc.com
 phone 800 696 2865
 fax 580 762 4722

© 2013 Ortlieb Präzisionssysteme GmbH & Co. KG. • D-S-EN-0913



A world first



UltraPE Precision meets Efficiency

Ultra-precise clamping technology

The future of clamping technology is being shaped by constantly rising demands and ever tighter tolerances. Ortlieb has developed the new, ultra-precise UltraPE class of chucks specifically to meet requirements in machining.

UltraPE is based on the principles of Ortlieb's tried and tested collet chuck technology and minimises set-up times and downtimes. Redesigned from scratch, it boasts unique features that allow it to meet the demands of high-precision component production.

For sectors such as the automotive, medical technology, watchmaking and aerospace industry, UltraPE is the ultimate solution.

Combining productivity and precision

With a concentricity and changeover accuracy of $\leq 4 \mu\text{m}$ and a clamping head changeover time of less than 20 seconds, UltraPE bridges the gap between precision and productivity. Thanks to the ingenious bayonet connection, the clamping head can be changed in the machine without the need for additional tools. Set-up times are substantially reduced, while machine availability is increased.

You too can benefit from Ortlieb's unique combination of precision, production expertise and our strong customer focus.

UltraPE – the ultimate chuck class

Concentricity and changeover accuracy $\leq 4 \mu\text{m}$

Technical features

Chuck

- Concentricity $\leq 4 \mu\text{m}$
- Reproducible changeover accuracy $\leq 4 \mu\text{m}$
- With removable end stop
- Extremely low-maintenance
- Interference contour reduced to a minimum

Collet

- Changeover without the need for additional tools
- Clamping diameter 4 – 52 mm
- Clamping tolerance $\pm 0.5 \text{ mm}$
- Six-segmented collet design for even mounting, higher clamping forces and reduced deformation

